



ROOM CONTROLLERS FOR 4-PIPE SYSTEMS, ON-OFF

DB-TA-343

FUNCTION

4-pipe fan coil control for room temperature applications with:

- knob for temperature setting;

- 2 relay outputs with dead zone (ZN);
- manual selection of On/Off and 3 motor speed (depending on models);
- internal or remote temperature sensor (optional).

TYPE	ON/OFF	3-SPEED	LOCAL S/W
DB-TA-343-139	•	•	zn
DB-TA-343-199	•		zn
DB-TA-343-999			zn

zn dead zone

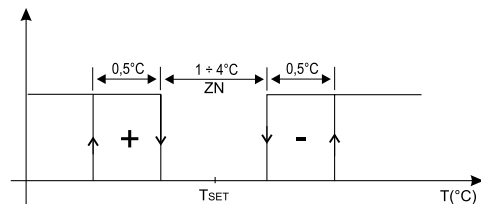
On request:

optional remote 2 m cable sensor, selectable by jumper; ordering code: NT0220-NTC100.

TECHNICAL DATA

Power supply: 24/230 Vac \pm 10%, 50/60 Hz
Max load: 6 A
Outputs: 2 SPDT relays 6 A 24/230 Vac
Power cons: 1 W
Sensor: NTC 100K
Setpoint: +5...+30 °C; mechanical limitation of the setpoint adjustment
Differential: 0.5 K
Dead zone: 1...4 K
Working: 0...+40 °C;
 10...90% r.h. (without condensing)
Storage: -20...+70 °C
 < 95 % r.h.
Housing: ABS fireproof according to UL94 V-0
 color (RAL 9010)
Protection: IP30, class II
Dimension: 144 x 82 x 34 mm
Weight: 210 g

Working logic



Jumper setting:

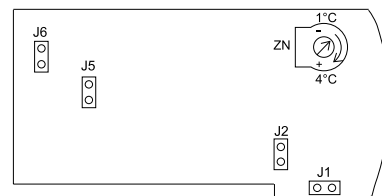
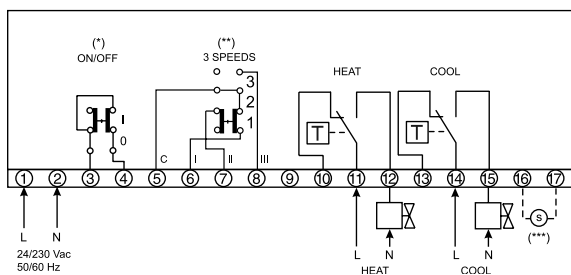
- J1 closed = internal sensor
- J2 closed = remote sensor
- J5 closed = power supply 24 Vac, 50/60 Hz
- J6 closed = power supply 230 Vac, 50/60 Hz

The products are factory supplied with internal sensor and 230 Vac jumper setting.

WIRING DIAGRAM

Terminal connections for 4-pipe air conditioning and heating systems.

The on/off and 3-speed switches are electrically independent from thermostat and are directly connected to terminals.



(*) only for models DBTA-343-139, DBTA-343-199

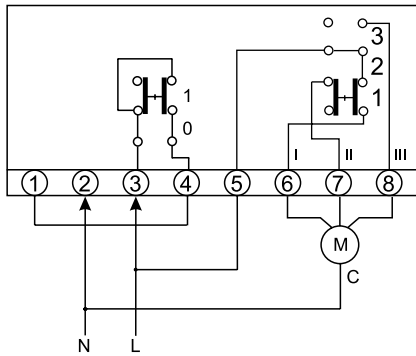
(**) only for models DBTA-343-139, DBTA-343-939

(***) remote sensor (optional)



Application examples of the terminal connections:

The On/Off switch drives the start-up of the thermostat and the motor is always powered



The On/off switch drives the start-up of the motor.

