

INSTRUCTION DBET



REV. A, 2024-11-04

Note! More information about the product can be found in the product sheet, which is available for download from www.industrietechnik.it

Caution! Read and understand the instruction before using the product.

Caution! Ensure that the installation complies with local safety regulations.

Warning! Before installation or maintenance, the power supply must first be disconnected in order to prevent potentially lethal electric shocks! Installation or maintenance of this unit should only be carried out by qualified personnel. The manufacturer is not responsible for any eventual damage or injury caused by inadequate skills during installation, or through removal of or deactivation of any safety devices.

Caution! Before installation or maintenance, the power supply should first be disconnected. Installation or maintenance of this unit should only be carried out by qualified personnel. The manufacturer is not responsible for any eventual damage or injury caused by inadequate skills during installation, or through removal of or deactivation of any safety devices.

Capillary thermostats

DBET is a serie of electro-mechanical thermostats for use in cooling, heating and ventilation systems.

Technical Data

Sensor element	Liquid-filled copper bulb
Contacts	Dust-tight microswitches with SPDT contacts (heat/cool)
Bulb dimensions	Ø9.5 (Ø8 for range 50...120°C)
Capillary length	1.5m
Breaking capacity	15 (8) A, 24...250 V AC
Ambient temperature	-35...+65°C
Ambient humidity	10...90 % RH (non-condensing)
Storage temperature	-40...+70°C
Storage humidity	up to 95% RH
Housing	Bayblend® base, ABS cover
Protection class	IP65
Isolation class	1
Weight	400 g

Article	Temperature range	Temperature range	Hysteresis	Step diff. max
DBET-4	-30...+30°C	1	2...20 K	-
DBET-4U	-30...+30°C 1	1	2...20 K	-
DBET-4/2	-30...+30°C	2	1K	2...5 K
DBET-5	-30...+30°C	1	1K	-
DBET-6	-30...+30°C	1	Minimum manual reset	-
DBET-16	20...90°C	1	2...20 K	-
DBET-16U	20...90°C	1	2...20 K	-
DBET-17	20...90°C	1	1 K	-
DBET-18	20...90°C	1	Maximum manual reset	-
DBET-10	50...120°C	1	2...20K	-
DBET-5U	-30...+30°C	1	1 K	-
DBET-7	0...60°C	1	2...20K	-
DBET-7/2	0...60°C	2	1K	2...5 K
DBET-8	0...60°C	1	1K	-
DBET-11	50...120°C	1	1K	-

Article	Max. bulb temp	Hidden setpoint	Suitable immersion well
DBET-4	60°C	-	DBZ-01 DBZ-02
DBET-4U	60°C	X	DBZ-01 DBZ-02
DBET-4/2	60°C	-	DBZ-01 DBZ-02
DBET-5	60°C	-	DBZ-01 DBZ-02
DBET-6	60°C	-	DBZ-01 DBZ-02
DBET-16	100°C	-	DBZ-01 DBZ-02
DBET-16U	100°C	X	DBZ-01 DBZ-02
DBET-17	100°C	-	DBZ-01 DBZ-02
DBET-18	100°C	-	DBZ-01 DBZ-02
DBET-10	150°C	-	DBZ-16 DBZ-17
DBET-5U	60°C	X	DBZ-01 DBZ-02
DBET-7	75°C	-	DBZ-01 DBZ-02
DBET-7/2	75°C	-	DBZ-01 DBZ-02
DBET-8	75°C	-	DBZ-01 DBZ-02
DBET-11	150°C	-	DBZ-16 DBZ-17

Installation

The unit can be mounted in any position. Remove the external knob and unscrew both screws on the cover. Use the supplied screws when mounting on wall or other surface.

Wiring

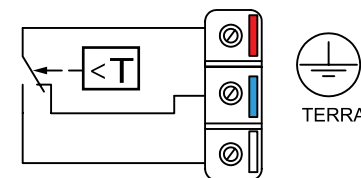
1-step models

Heating:

Connect to the red and blue terminal. The contact will open when the temperature rises.

Cooling:

Connect to the red and white terminal. The contact will open when the temperature drops.



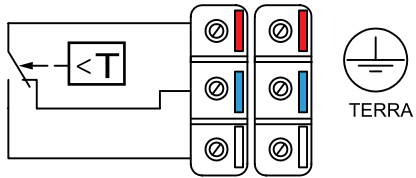
2-step models

Heating:

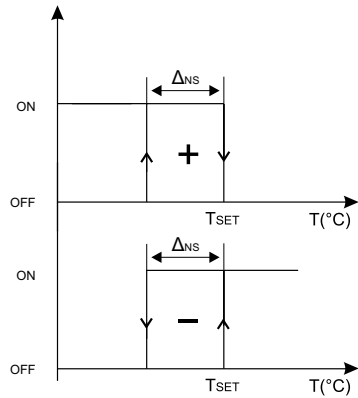
Connect to the red and blue terminal. The contact will open when the temperature rises. The step 2 contact will open first followed by the step 1 contact.

Cooling:

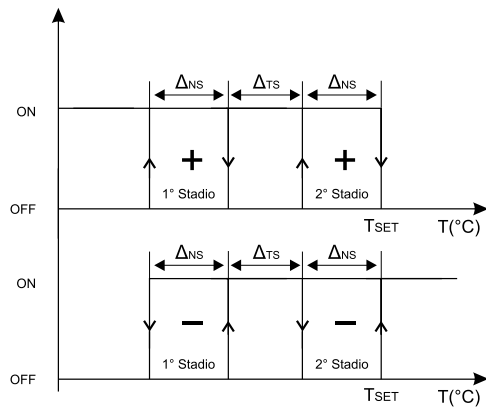
Connect to the red and white terminal. The contact will open when the temperature drops. The step 2 contact will open first when the temperature drops, followed by the step 1 contact.



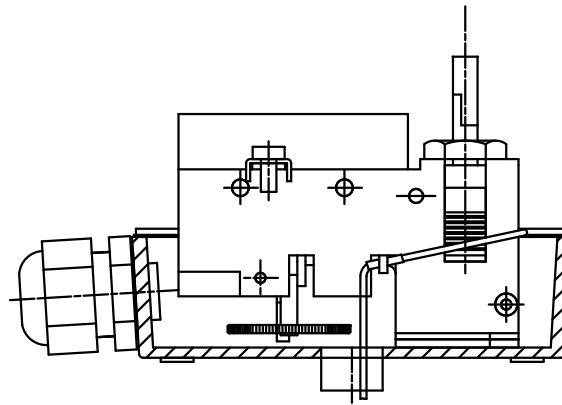
Logic activation single-stage models:



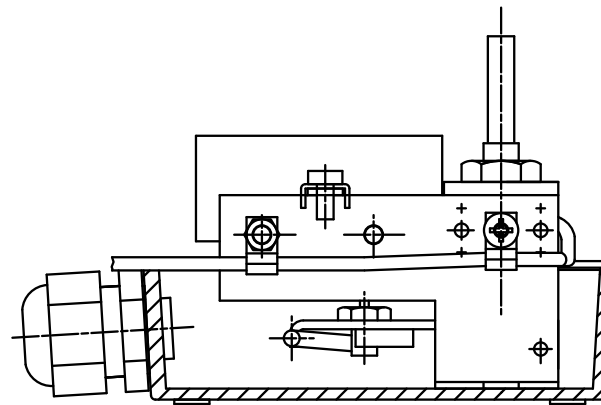
Logic activation two-stage models:



Hysteresis adjustment in the stage:

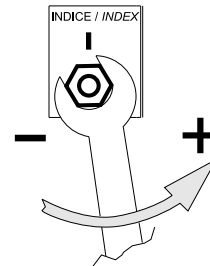


Step differential adjustment:



Reset

The set range may be calibrated by carefully turning screw under the cover.



This product carries the CE-mark. More information is available at www.industrietechnik.it.

Low Voltage Directive (LVD) standards

This product conforms to the requirements of the European Low Voltage Directive (LVD) 2014/35/EU through product standards EN 60335-1.

RoHS

This product conforms to the Directive 2011/65/EU of the European Parliament and of the Council through standard EN 50581:2012.

Contact

AB Industrietechnik SRL, Via Julius-Durst-Str. 50, I-39042 Bressanone (BZ)
Tel: +39 0472 830626, Fax: +39 0472 831840
www.industrietechnik.it, info@industrietechnik.it