



EXOdesigner

EXO programming environment

Windows-based programming environment for the EXO system controllers as well as SCADA and project design.

Programming of controllers with ready-made objects, function blocks and/or the high-level language EXOL. Designing of SCADA graphics using templates and symbols.

EXOdesigner is a set of software for configuring your EXO system. It can be used for:

- Creating an EXO system with communication structure and general project design
- Configuring the controllers in a project
- Configuring computers and EXOscada graphics

All EXO controllers are fully software compatible and are programmed using EXOdesigner, a PC based development environment. The compatibility also applies across product generations, which offers a number of advantages:

- You can exchange controllers in a system without having to rewrite the programs. When you upgrade your system, the old programs can be re-used.
- In order to program the EXO controllers, you only need to learn one programming tool.
- Investments in program development stay the same over time.

The controllers are freely programmable, which gives maximal flexibility. You can create your own applications and program library.

The programming can be performed in several ways. The easiest and fastest way is to use the ready-made function blocks available in EXOdesigner. By combining these you quickly build full scale applications. A large number of function blocks for the most common tasks in building automation are included in EXOdesigner, e.g. for controlling pumps, fans and heating, handling alarms, time channels, communication, etc..

Quick facts about EXOdesigner

- Designing of SCADA graphics using templates and symbols
- Programming of controllers
- Includes an on-line debugging tool for easy configuration
- Designing project structure, i.e. communication and computers
- Smart tools for re-using graphics and controller configuration
- Very flexible system design tool

Controller Builder

Controller Builder is a built-in function that makes it easy to build a system in EXOdesigner. A large library of function blocks is available.

Controller Builder gives increased efficiency and speed with maintained flexibility. The function is compatible with the other parts of the EXO system.

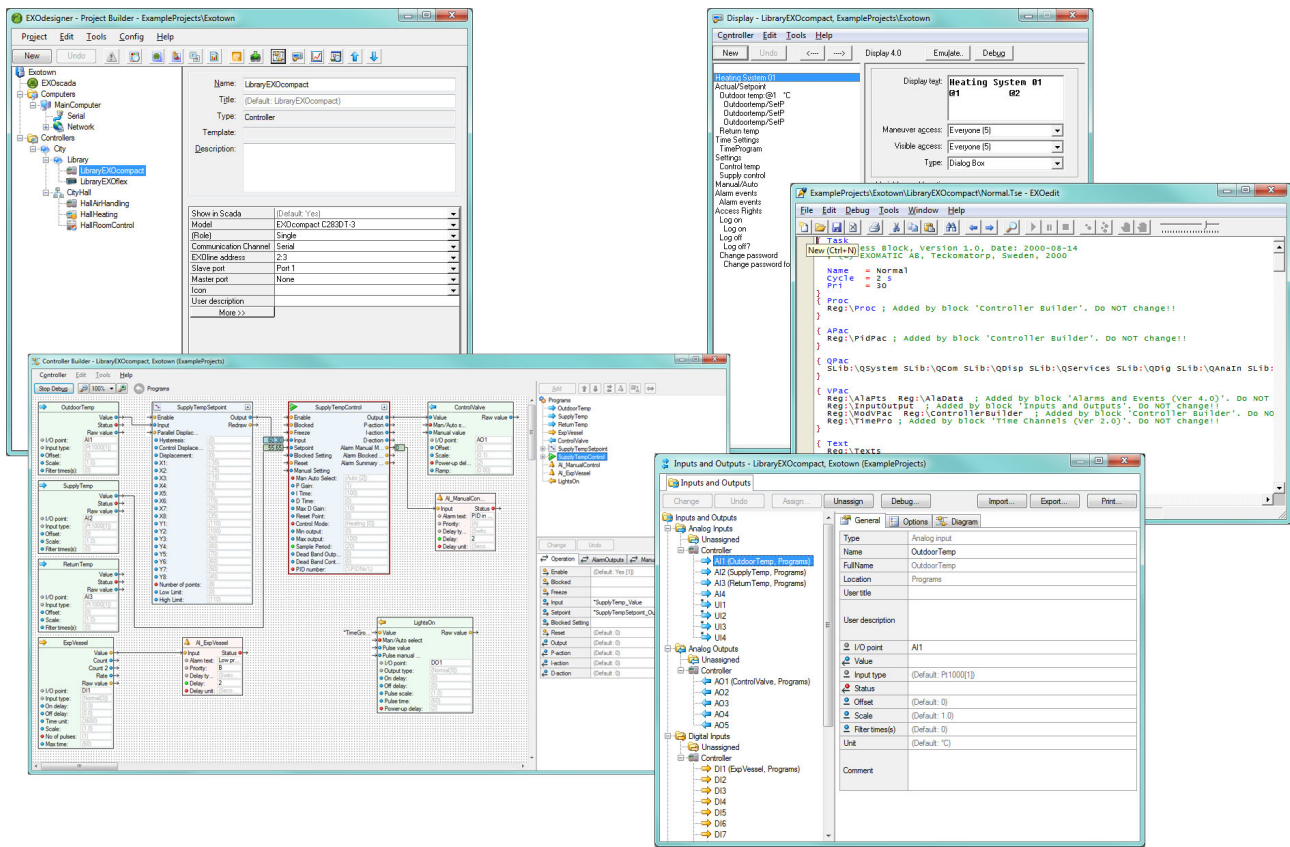
EXOL

EXOL is the programming language for EXO and has a large number of commands and functions that facilitate the programming of automation applications. Thanks to the possibility to use ready made function blocks, and to be able to customise the programs with EXOL programming, maximum speed and flexibility in the development process is guaranteed.

System Requirements

EXODesigner can be installed on 64-bit computers with the following operating systems:

- Windows 7 Professional with Service Pack 1 (or better)
- Windows 8 Pro (or better)
- Windows 8.1 Pro (or better)
- Windows 10 Pro (or better)
- Windows Server 2008 with Service Pack 2 (or later)
- Windows Server 2008 R2 with Service Pack 1 (or later)
- Windows Server 2012
- Windows Server 2012 R2



Product documentation

Document	Type
News in EXO 2016	Describes the news contained in EXO 2016, in which EXOscada is included.
EXOhelp	The help system that is included in the EXO installation.

News in EXO 2016 can be downloaded from Regin’s FTP server. The FTP is intended for our system customers who need to share files with us, e.g. at technical support. Contact one of our sales engineers to get access to the FTP server.

Head Office Sweden
 Phone: +46 31 720 02 00
 Web: www.regincontrols.com
 Mail: info@regin.se