



Regio tool

Software tool for Regio

Windows-based software tool for configuration and maintenance of the controllers in the Regio Midi and Maxi series.

- Free of charge
- Easy configuration, installation and start-up

Regio

Regio is a wide series of controllers that handle heating and cooling.

The controllers are divided into three different series, Mini, Midi and Maxi. Mini are pre-programmed, stand-alone controllers. The Midi group are pre-programmed controllers with communication. Maxi consists of freely programmable controllers with communication.

The Midi and Maxi controllers are pre-programmed, but can be configured for a specific application with Regio tool.

Free download

Regio tool can be downloaded free of charge from Regin's website.

Applications

With Regio tool and a PC you can easily configure and adjust the default settings for Regio Midi and Maxi. You can prepare the settings in your office and load them into the room controllers on site.

You can also copy settings from one controller and download them into another. For service and error detection purposes, you can connect the PC to a room controller and get a clear overview of the settings and status.

Communication cables

For a Regio controller to communicate with a PC running Regio tool, a communication cable is required. The cable contains a signal converter that converts the signals passed between the controller and the PC. Regin offers two different cables:

- E-CABLE-RS232, which uses the RS232 standard
- E-CABLE-USB, which uses the USB standard

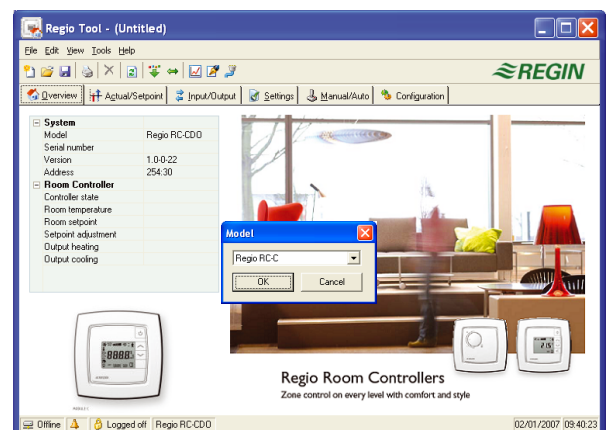
- All settings can be made in the software and loaded into the controllers on site

Easy to install and start-up

Regio tool is a self-installing program. You need a PC running Windows 2000 or Windows XP.

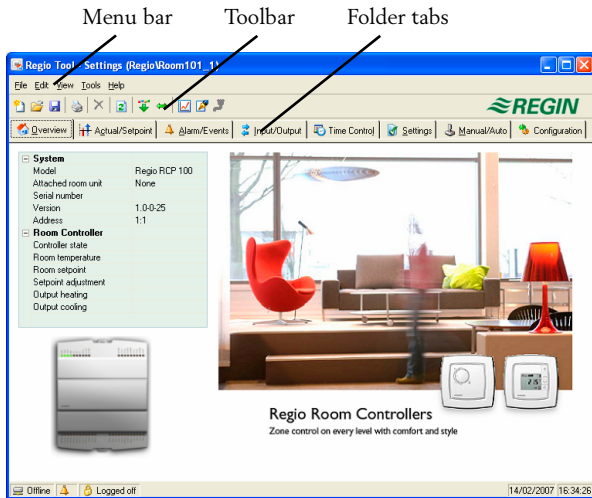
On start-up, Regio tool will automatically search for any controller connected to the computer and connect to it if it is of a type suitable to the program being loaded. If the program does not find a suitable Regio controller, it will start offline.

Regio tool always starts with a box where the user chooses which Regio model is used with the System folder displayed.



Design and functions

The display window is divided into several parts. The contents depend on for which Regio model the program has been configured.



Menu bar

At the top of the window is the Menu bar, which contains Standard Windows type drop-down menus. Here, the user can for example handle configuration files, update parameter values, create real time charts etc.

File

The items in the file menu are used to handle configuration files. You can for example create new files, open saved files and save the current file.

Edit

The edit menu only contains one item, Delete. Delete is only used in conjunction with Holiday periods to remove assigned periods.

View

The view menu contains one item, Refresh. Regio tool is not a dynamic program. If a parameter value is changed in a connected controller, the corresponding value in Regio tool will not automatically be updated. The Regio tool user must initiate reading of parameter values from the controller.

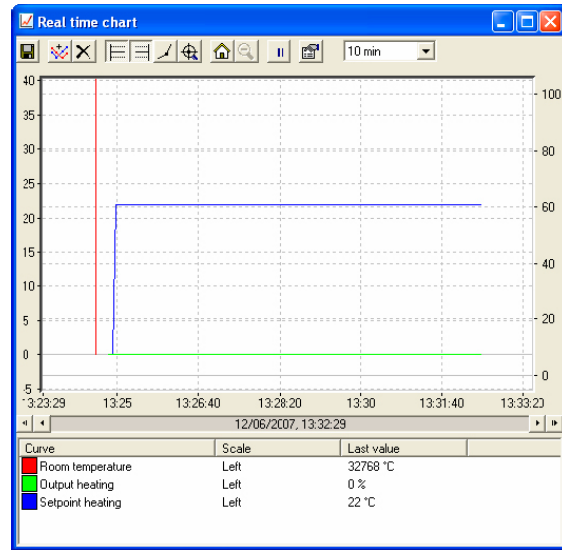
Refresh initiates a reading of all dynamic parameters from the connected controller. The display is updated with the new values.

Tools

In the tools menu you can:

- Download and synchronise all parameters
- Reset parameters to default values
- Set the controller date and time
- Change controller addresses
- Reload the controller
- Log on and log off
- Change the password
- Set the communication between Regio tool and the controller

In the tools menu you can also create a real time chart with up to four parameters. The horizontal timeline can be changed so that the chart window can show longer or shorter intervals. Values are recorded every 5 seconds. All recorded values can be saved to a text file for later use.



Help

Gives access to help texts and revision information.

Toolbar

Under the Menu bar is the Toolbar, which gives direct access to various functions.

Folder tab

Under the Toolbar is the Folder tab. It consists of a number of folders that can be shown one at a time in the area below the tabs.

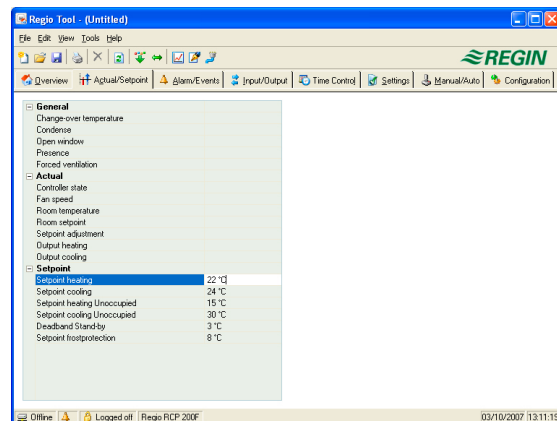
If you change a value, you easily download it to the Regio controller for it to become active.

Overview

When you are in the Overview area you can view and update the most important control parameters.

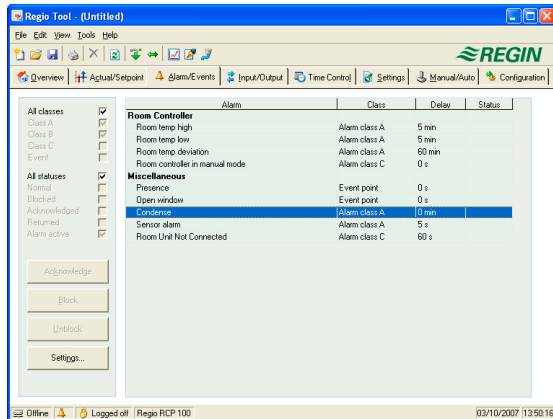
Actual/Setpoint

Actual values for inputs and outputs and relevant setpoint values are displayed. Actual and setpoint values must be downloaded to the controller in order to take effect.



Alarms/Events (only RCP controllers)

Permits handling of all enabled alarms. Any changes made to alarm status in Regio tool are instantly transmitted to the controller. Alarms can be shown according to class or status.

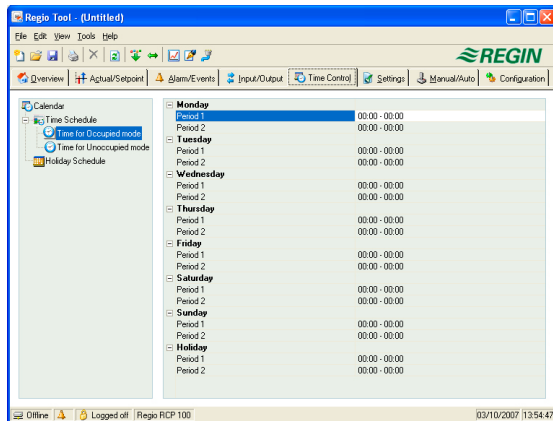


Input/Output

Shows actual values for all inputs and outputs.

Time Control (only RCP controllers)

Here you set the daily comfort periods and the holiday periods. Holiday periods that have been set will be valid every year until they are removed.



Settings

Here you set the parameters P-band and I-time.

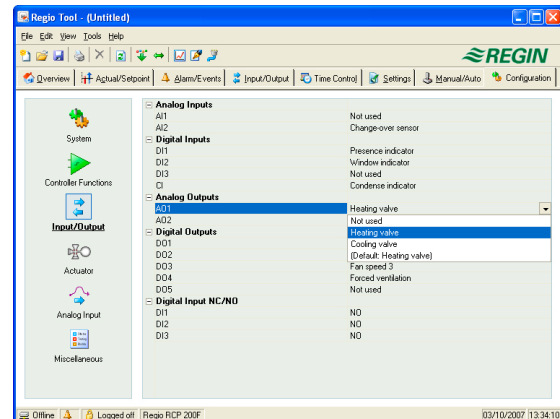
For RCP controllers you can also set alarm parameters here.

Manual/Auto

In this menu you can take manual command of most controller functions. It is very useful for testing purposes.

Configuration

This folder contains all the configuration parameters for the controller. Only relevant configuration alternatives are shown. Which alternatives are relevant depends on what has been configured in the Input/Output folder and under Controller Functions in the Configuration folder.



Running Regio tool from a project in Project Builder

Project Builder is the configuration environment of Regin's EXO system and is used for creating new projects, opening and changing existing projects etc. It is also used for opening windows for configuration of the controllers' functions, EXO4 windows etc.

Regio tool can be run from an EXO project in Project Builder. The controller settings that have been made in Project Builder will then be used.

Product documentation

Document	Type
Regio tool user manual	Aid during installation and use of Regio tool

The product sheets can be downloaded from www.regincontrols.com.

Head office Sweden

Phone: +46 31 720 02 00
 Web: www.regincontrols.com
 Mail: info@regin.se

